



CHESS LESSON IN INCLUSIVE SCHOOLS

Anna Charchyan

***Lecturer in Special and inclusive
education faculty, ASPU
Researcher at “Chess” scientific
institute***

School types in Armenia

Public

Private

Inclusive

**Special
(children with speech
disorders, visual impairments,
intellectual
and physical disorders)**

Published Previous Research Results

- **Challenges of teaching chess to visually impaired children in 2019.**
- **The development of the ability of forward reflection through the chess, co-author A. Khudoyan, Publisher, 2017.**
- **The impact of chess on development of mental processes children with CSEN. co-author A. Khudoyan, International Chess Conference, 2016.**
- **The role of chess in the regulation of children's behavior in the CSEN. co-author A. Khudoyan, International Chess Conference, 2016.**
- **"The positive influence of chess on children development" publisher "Internauka", 2016.**
- **"The expressions of chess language in compositions", 2016.**
- **"The application of psychological pedagogical methods in the teaching process of children with special needs", 2016.**

Schools where we conducted our research

N 125 inclusive basic school

N 135 inclusive basic school

N 92 inclusive basic school

N 60 inclusive basic school

N 6 inclusive basic school

- During the class observations we have identified the involvement of pupils with CSEN and their level of participation in chess classes.

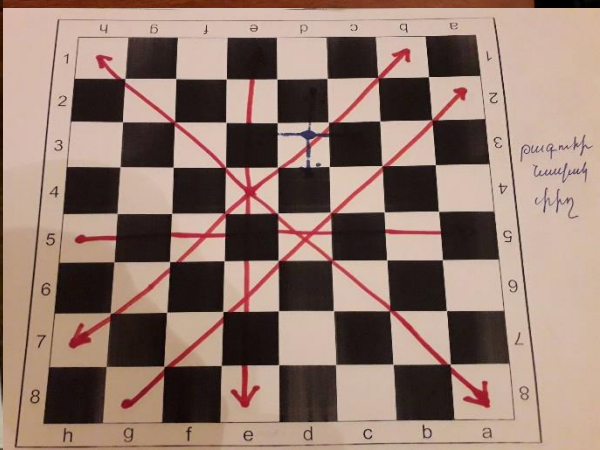
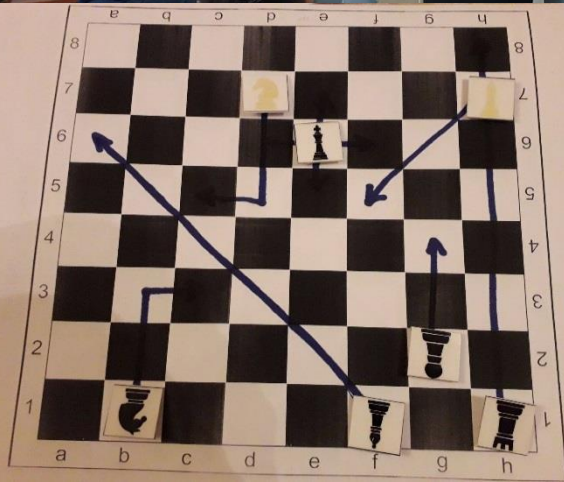




- through a questionnaire we have determined their course of action on their own initiative and the implementation of the proposal / alternative risk responses / given to the type of problem severity.
- Discussing this problem among the teachers of CSEN pupils.



- We have proposed application of our proposed methods to CSEN pupils to attract chess class alternative in the form of games, preparation and implementation, associations of different chess positions with different situations in life. Then we have implemented data collection, quantitative and qualitative analysis of the results.

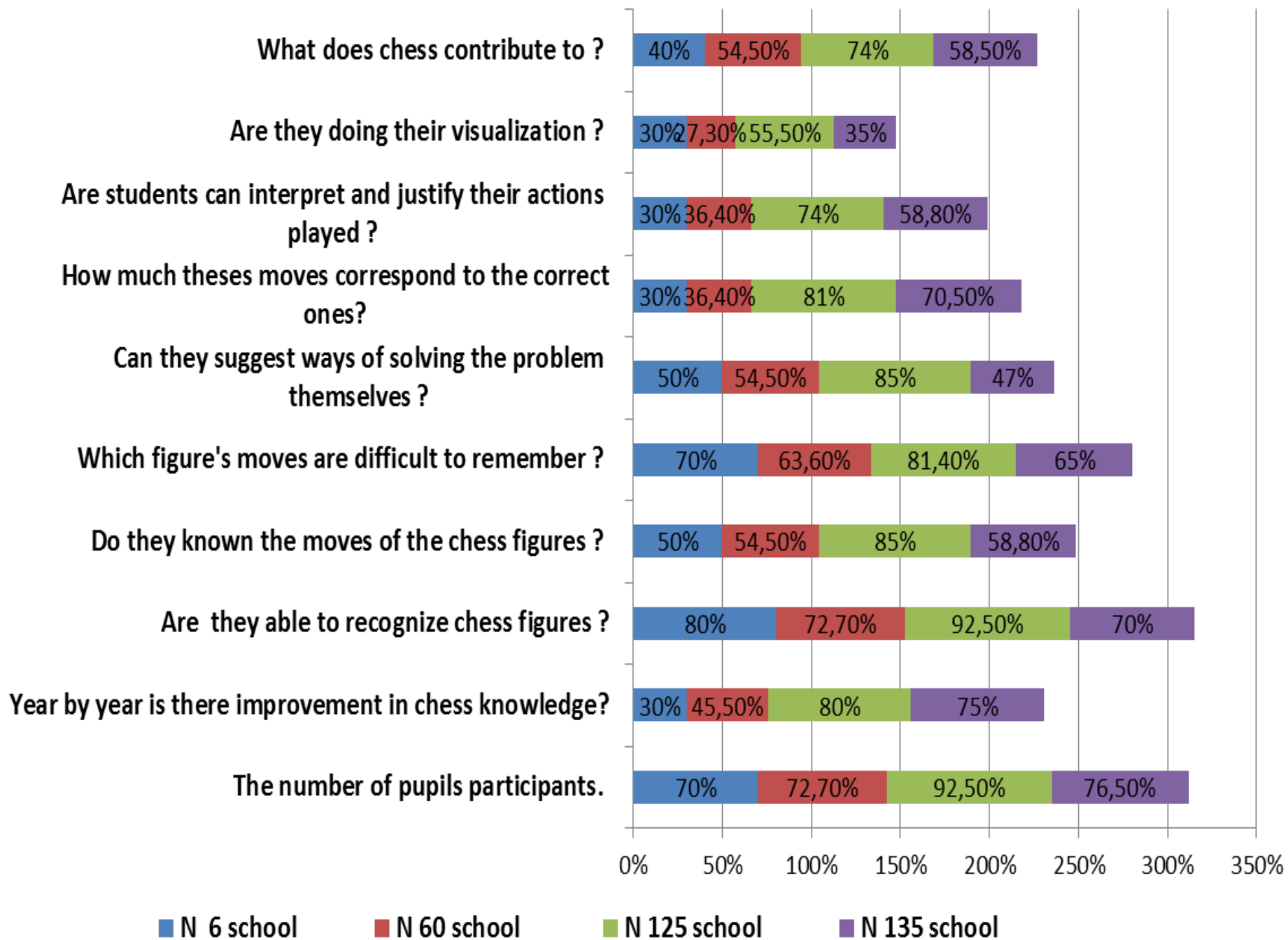




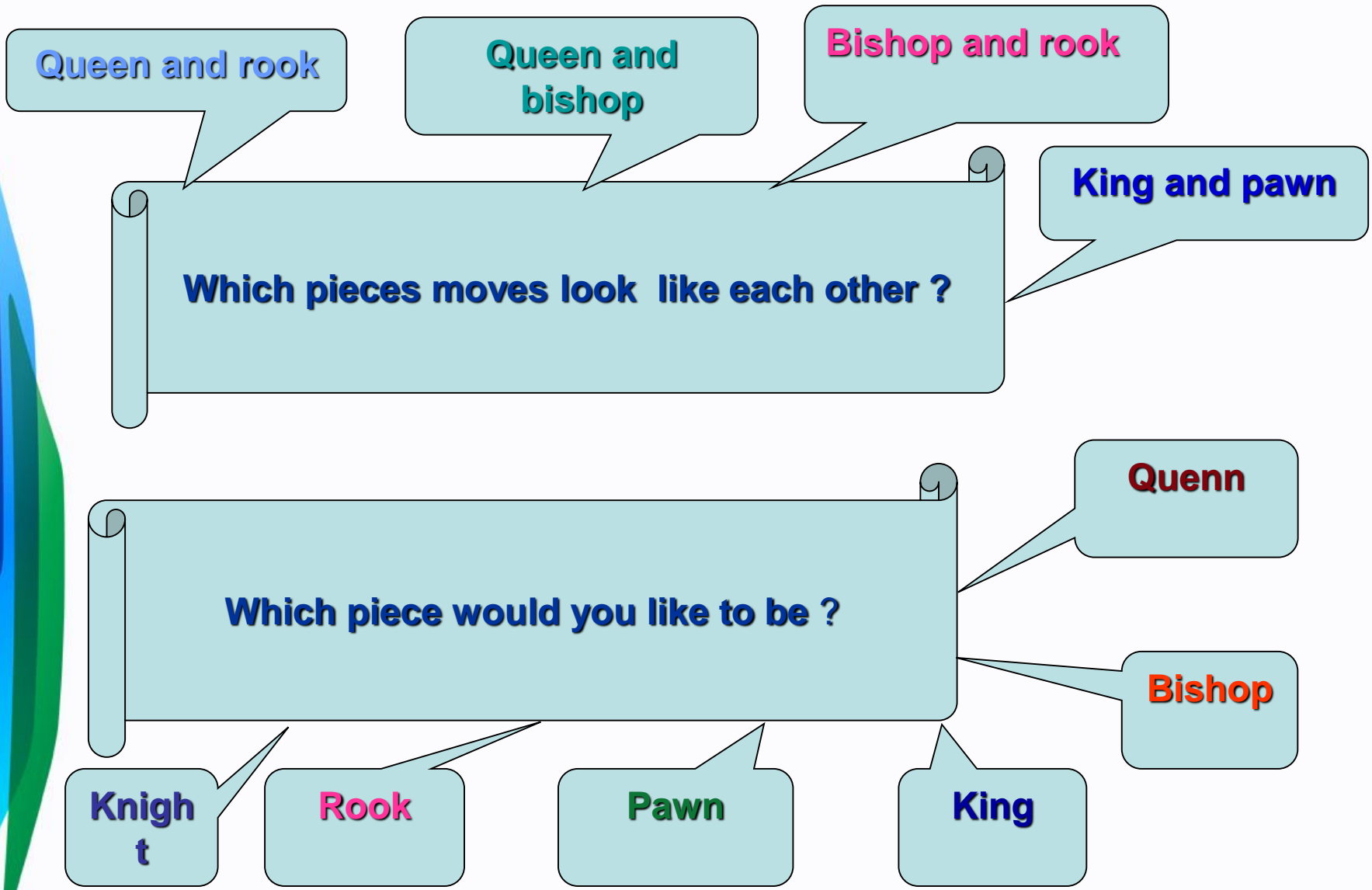


Inclusive schools in inclusive education program for children at the class level of involvement

Schools Questions	The number of pupils participants n=65			
	N 6 inclusive basic school n=10	N 60 inclusive basic school n=11	N 125 inclusive basic school n=27	N 135 inclusive basic school n=17
1.The number of pupils participants.	70%	72.7%	92,5%	76,5%
2. Year by year is there improvement in chess knowledge?	30%	45,5%	80%	75%
3. Are they able to recognize chess figures ?	80%	72,7%	92,5%	70%
4. Do they known the moves of the chess figures ?	50%	54,5%	85%	58,8%
5. Which figure's moves are difficult to remember ?	70% knight and queen	63,6% knight	81,4% knight	65% pawn and knight
6. Can they suggest ways of solving the problem themselves ?	50%	54,5%	85%	47%
7. How much theses moves correspond to the correct ones?	30%	36,4%	81%	70,5%
8. Are students can interpret and justify their actions played ?	30%	36,4%	74%	58,8%
9. Are they doing their visualization ?	30%	27,3%	55,5%	35%
10. What does chess contribute to ?	40% memory, attention 20% thinking	54,5% behavior 36,4% thinking	74% behavior 44,4% thinking	58,5% behavior 29% thinking



The children's associations with any specific moves, pieces or position and situation



Road

What do you associate with the rook's moves?

What do you think the bishop's moves are like?

Alley

Step

Triangel

What do you think the king's moves are like?

The queen's short moves

Turrtle

Small child steps


Emmet

What do you think the knight moves are like?

Kangaroo

Russian letter Г

Armenian and english letter L



Frog when he takes two steps

Real soldier's steps

What do you think the pawn's moves are like?

Rabbit

Kangaroo

What do you think the queen's moves are like?

Snowflake

Letter X

- This chess position teacher calls a "fork"

- The teacher creates a position similar to the "fork position" and suggests the children to fill missing piece



Easy questions by teachers for CSEN children

- How to defend ?
- How can we capture a hit figure ?
- Teacher creates a problematic situation and asks pupils to do moves and find solutions.
- When the black queen hits the white king, what is this called?
- What is check and checkmate, stalemate?
- Which pieces move similar to each other?
- Which piece can jump over the other pieces?
- Which piece can never go back?

Complex questions by teachers for CSEN children

- How many types of defense do you know in chess?
- What does it mean to capture the hitting figure?
- How can we benefit from this piece?
- The teacher often changes the position of the figures on the big board and asks children to position them as children confuse their positions.
- Does defense means to move away from the hitting piece's attack?
- What does it mean side-eat ?
- What does it mean “black field”, “white field” ?

Involvement of CSEN children

1. The teacher offers children's to position pieces or to make some position, one of them will position the black pieces and the other white pieces.



2. The teacher positions the top pieces and below line is organized by pupil.

3. One of the pupils dictates, the other put the pieces on the board.



- **Teacher's assignment of No. 135 school present interesting information about the world famous chess-players' biographies**



CSEN children offer their own options of solving the problem



CSEN children offer their own options of solving the problem



Children not participating in chess class

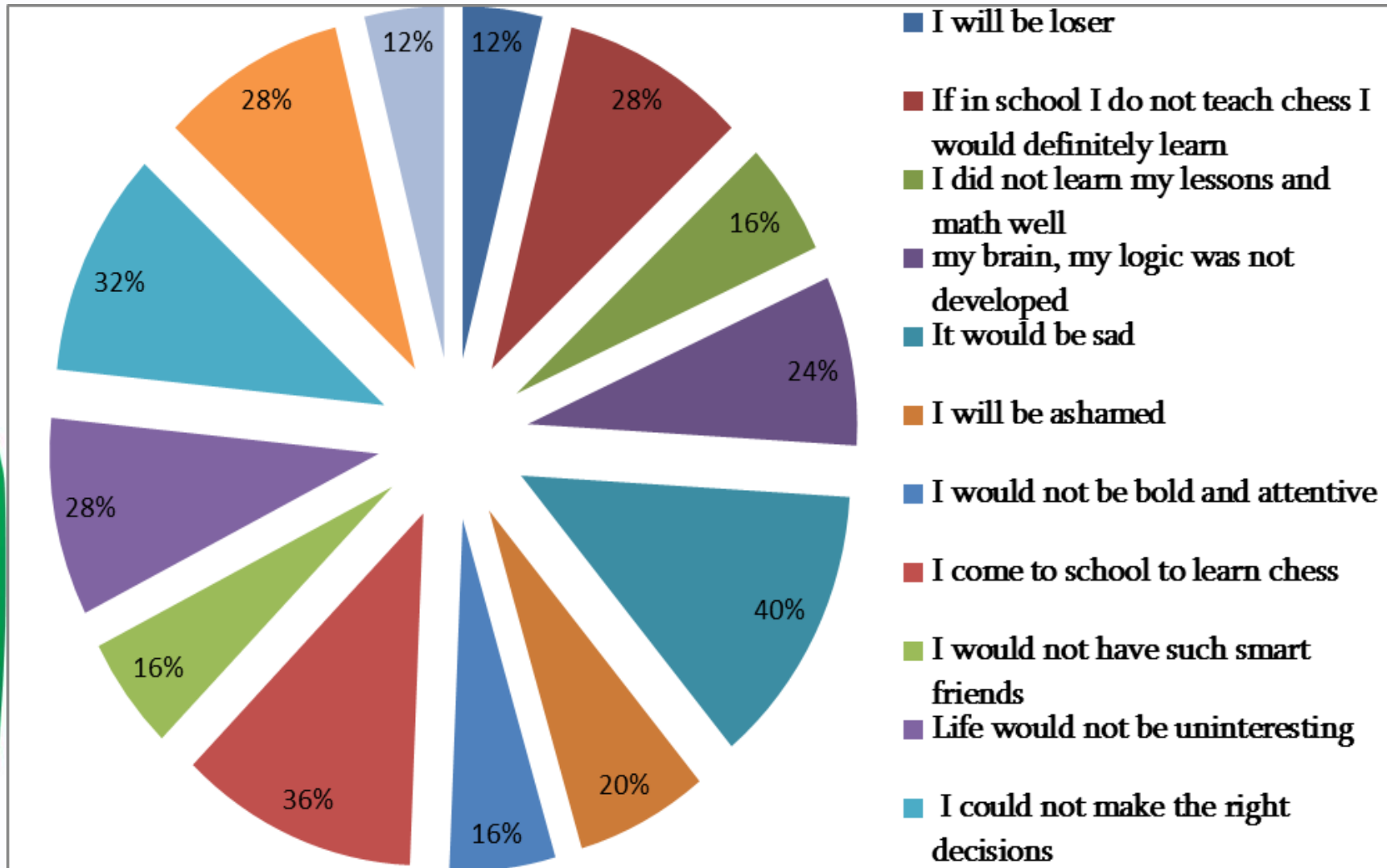


5th grade students playing chess during the break



Essay or unfinished ideas

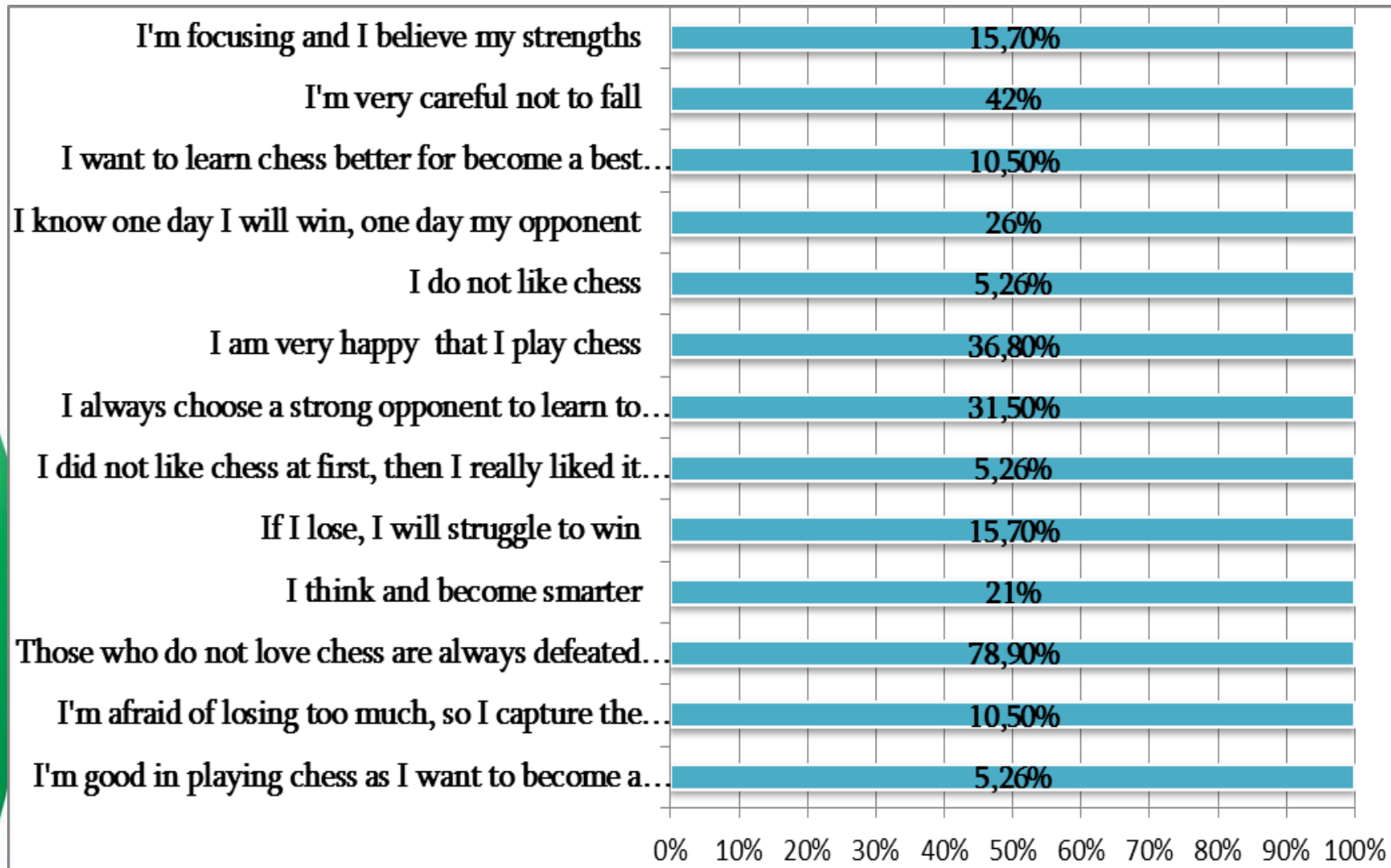
If I did not know how to play chess



Results of the assignment with 25 students

Essay or unfinished ideas

When I play chess.....



Results of the assignment with 19 students

Conclusion

- Chess instructors need an endless range of psychopedagogical methods to work with children with CSEN.
- Chess is a good way to develop children's speech, expression, vocabulary, grammatical structure of speech, and other mental processes.
- It is clear from the essay that teacher is very important factor is determined by the child's motivation, activity and interest of the child, which undermines the child's educational process.
- Everyone should know how to play chess, because chess is a communication language.

Thank You

