

CHESS SKILLS AND THREE “C”S OF 21ST CENTURY

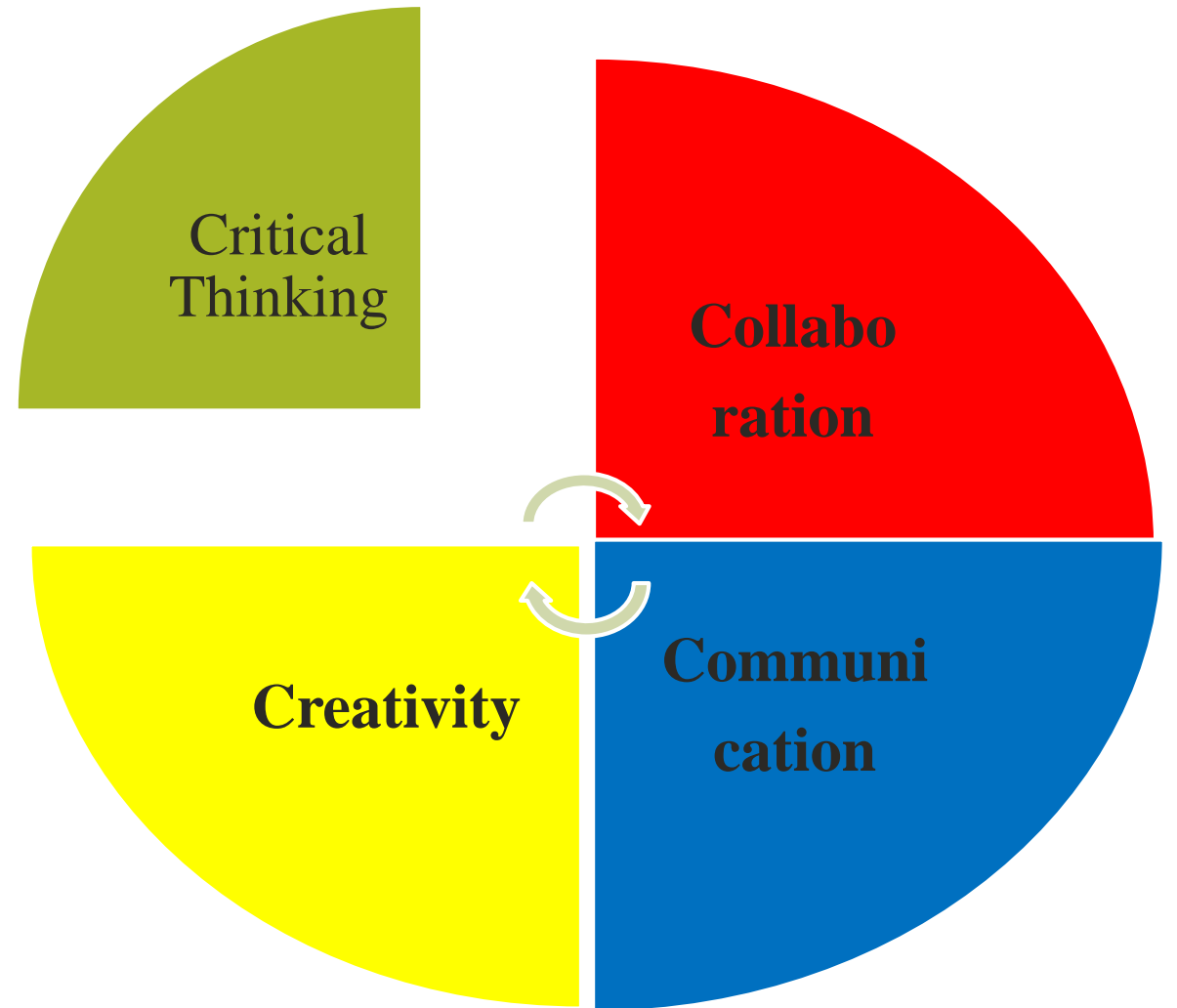
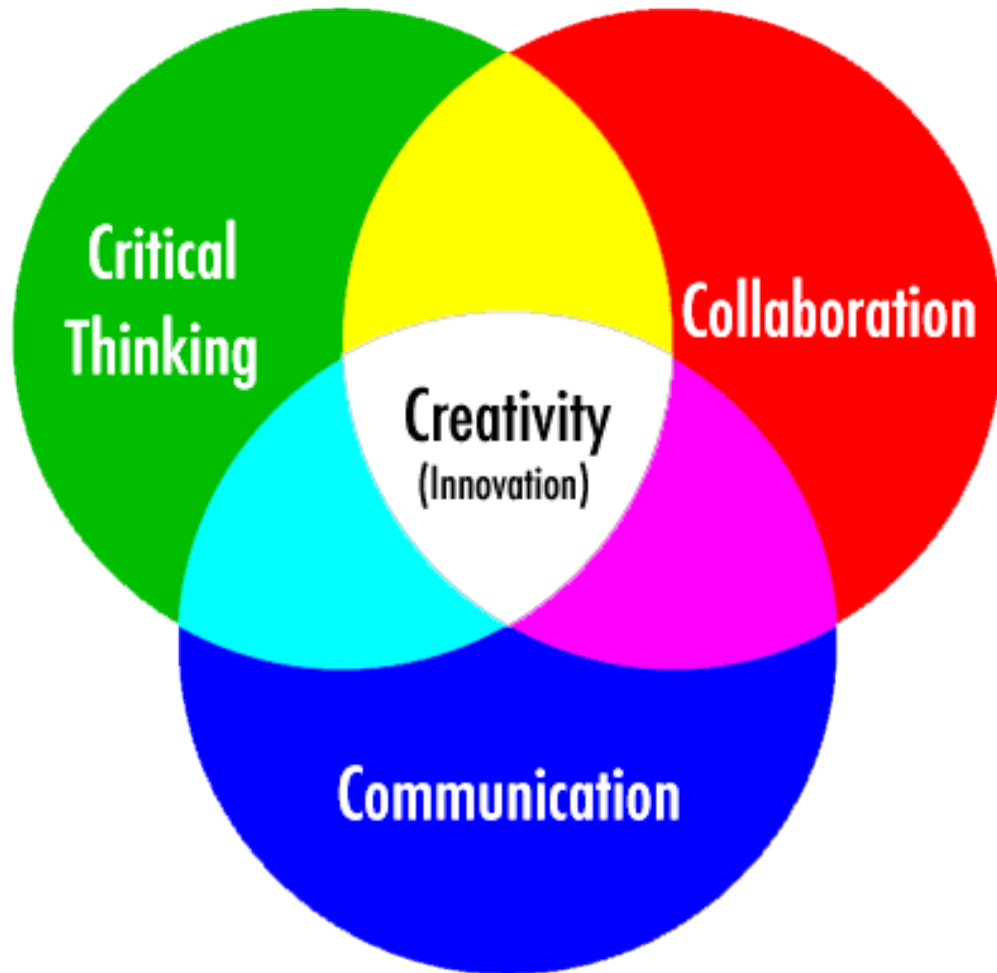


Tamara SARGSYAN

Samvel MISAKYAN

Emma KOSTANYAN

4 “C”s OF 21ST CENTURY



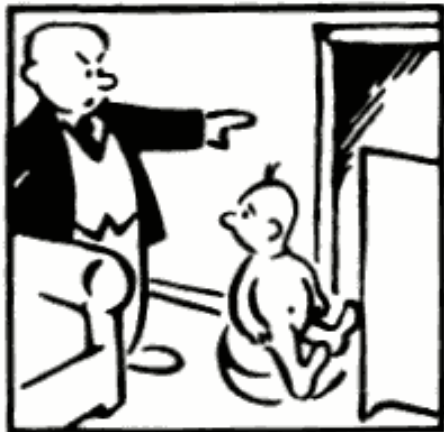
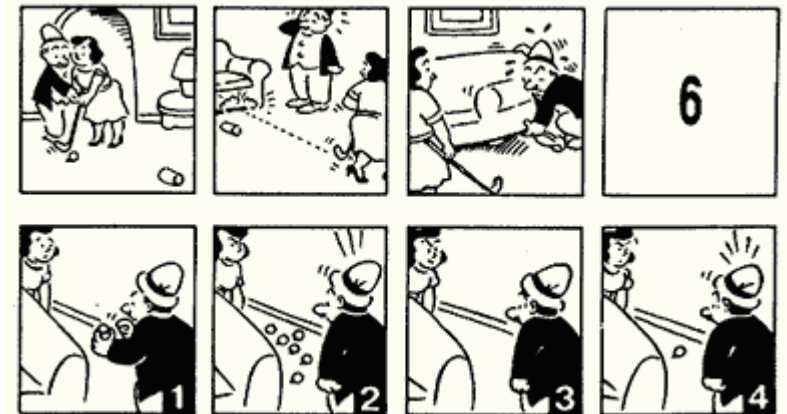
TTCT TEST WAS CONDUCTED WITH 181 CHILDREN, 2 schools 2nd 3rd & 4th grade



GUILFORD'S TEST OF SOCIAL INTELLIGENCE

56

4th-grade children



CHESS SKILL TEST

171 CHILDREN

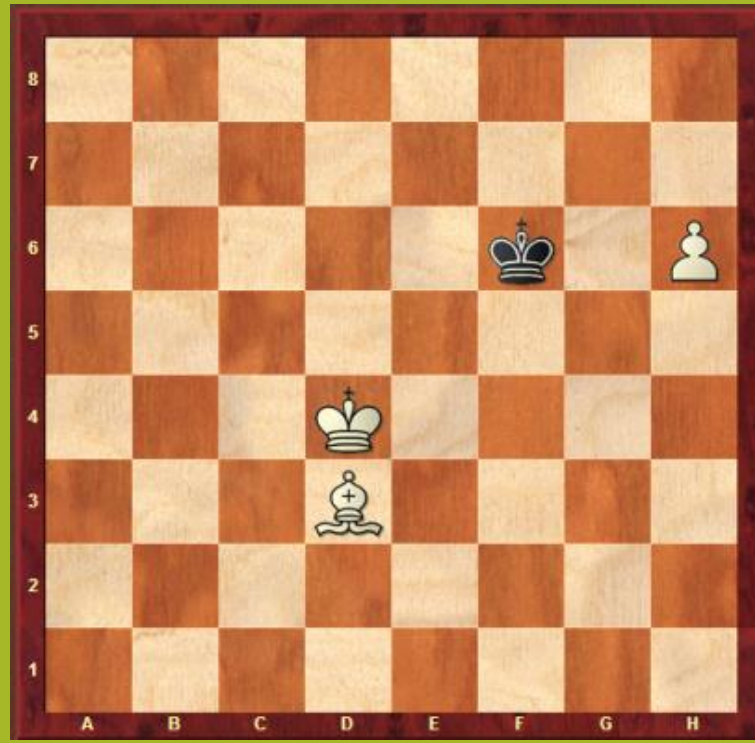
2 schools

2nd 3rd & 4th grade

Calculation Skills

Planning Skills

Move Pruning Skills



SIGNIFICANT CORRELATION



The diagram features a central blue 3D rectangular box containing the correlation coefficient $.722^{**}$. This box is flanked by two large white arrows pointing outwards. The left arrow contains the word "PRUNING" and the right arrow contains the words "SOCIAL INTELLIGENCE". The entire diagram is set against a solid green background.

PRUNING

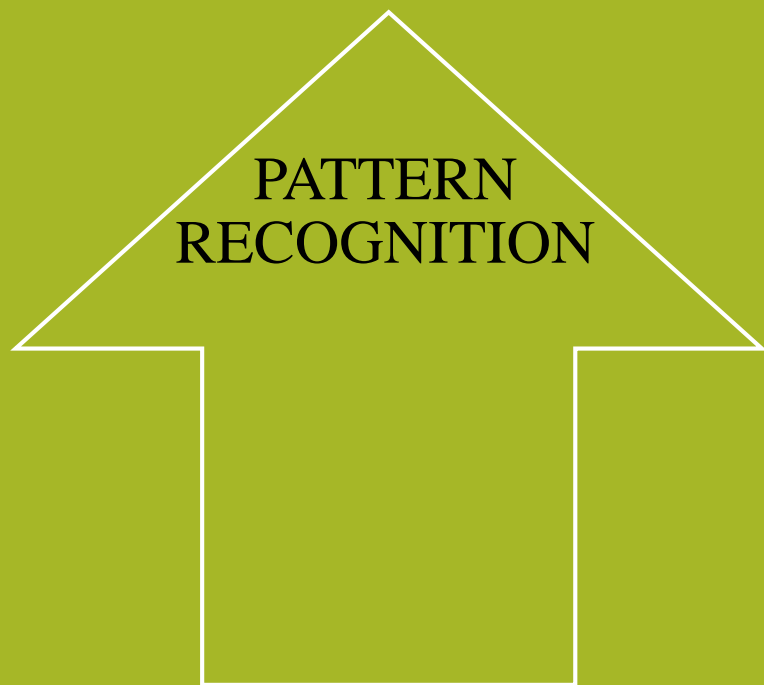
$.722^{**}$

**SOCIAL
INTELLIGENCE**

SIGNIFICANT CORRELATION

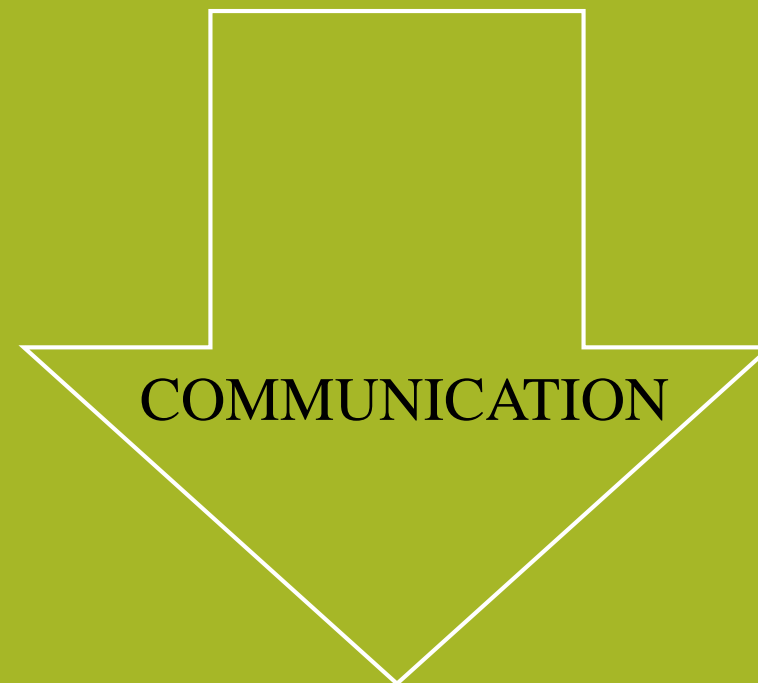


SIGNIFICANT CORRELATION

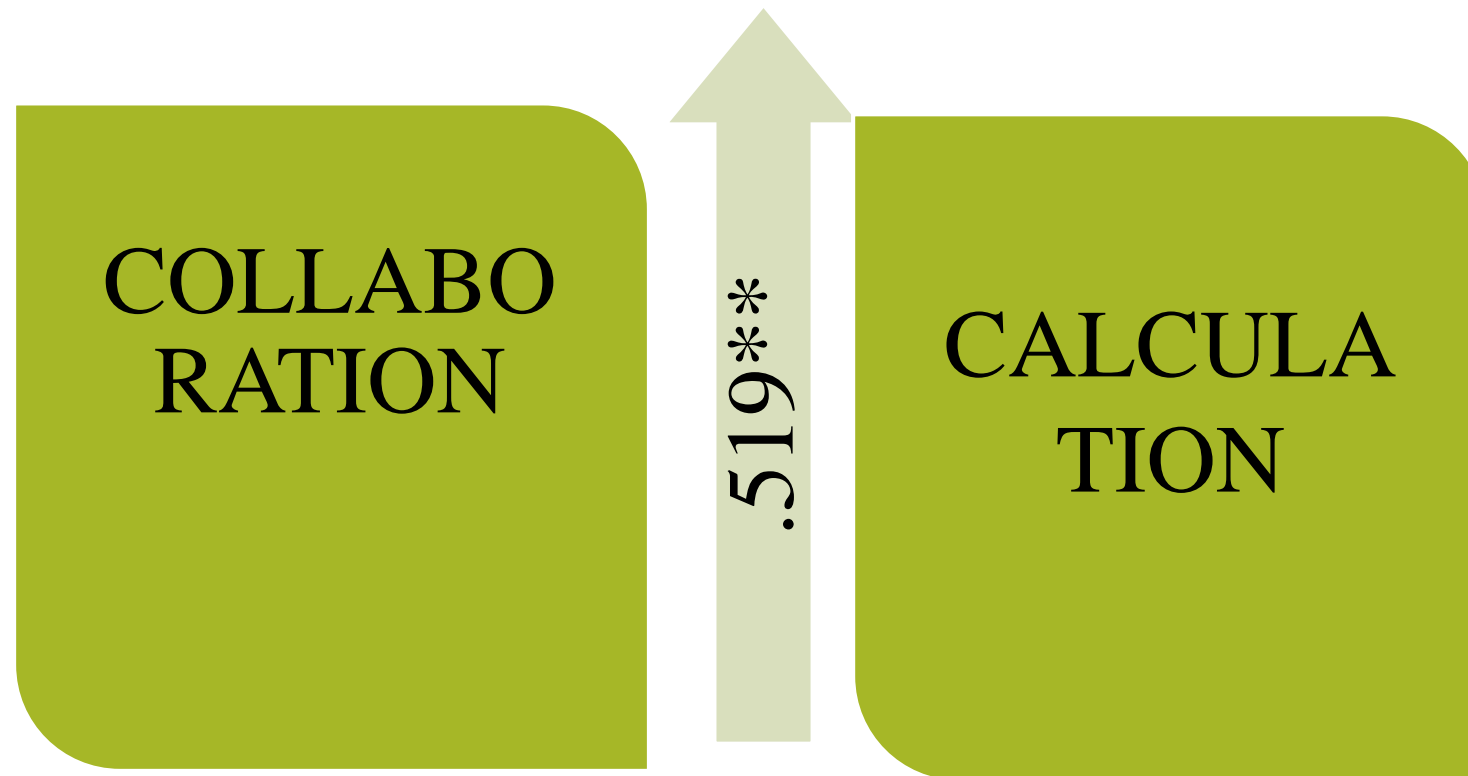


*.547***

A small, 3D-style square box with a light green top and dark green bottom, containing the red text ".547**".



SIGNIFICANT CORRELATION



CONCLUSIONS

This study has found out that little chess skills children gain at primary school are connected with some 21st-century learning skills. We are still far to say, whether chess has influenced on formation of these skills, or they are based on certain personal features of children that impact on success in chess as well.

THANK YOU

